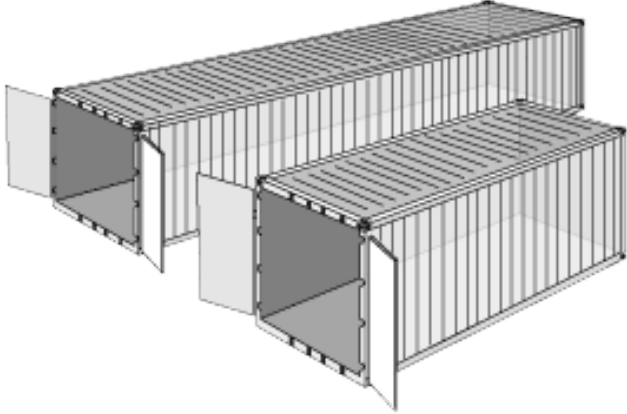


Container Size

Container Box



Dry containers 20' and 40' (general purpose) are manufactured from either aluminium or steel. They are suitable for most types of cargo. Aluminium dry containers have a slightly larger payload than steel, and steel dry containers have a slightly larger internal cube.

Dry container dimensions

Specific dimensions and capacity of dry containers may vary depending on the container manufacturer, the age of the container and the container owner. The specifications listed below are, however, representative.

20' Dry Container

Tare weight	Payload capacity	Cubic capacity	Internal length
2,300 kg 5,071.5 lbs	25,000 kg 55,126.9 lbs	33.2 m ³ 1,172 cu ft	5.9 m 19.4 ft
Internal width	Internal height	Door opening width	Door opening height
2.35 m 7.7 ft	2.39 m 7.9 ft	2.34 m 7.7 ft	2.28 m 7.5 ft

40' Dry Container

Tare weight	Payload capacity	Cubic capacity	Internal length
3,750 kg 8,268.8 lbs	27,600 kg 61,200 lbs	67.7 m ³ 2,389 cu ft	12.03 m 39.5 ft
Internal width	Internal height	Door opening width	Door opening height
2.35 m 7.7 ft	2.39 m 7.9 ft	2.34 m 7.7 ft	2.28 m 7.5 ft